

# Vinylcomfort



**Ultimate Luxury**  
with the comfort of cork



Cork is a natural material that comes from the bark of the cork oak tree, with unique and incomparable qualities that no ingenious human has yet managed to copy or improve. Its cell structure resembles a honeycomb, enabling it to act as a natural thermal and sound insulator and also providing shock absorbing properties.

These exclusive qualities of cork make it ideal to use in flooring, as it grants an exceptional comfort while also being a renewable and sustainable resource.



Over the years, Wicanders has developed floor and wall coverings with exclusive properties due to its innovative Corktech technology.

By using a unique engineered multilayer structure, which combines state of the art technology with the exclusive natural properties of cork, a higher standard in flooring was achieved, providing the perfect match between beauty, comfort and durability.

**Vinyl**comfort floors accomplish the ultimate luxury with highly detailed vinyl designs that result in realistic and sophisticated reproductions of wood and stone textures.

The uniqueness of **Vinyl**comfort floors was achieved by integrating a prime quality core layer of cork, which provides superior comfort, noise reduction and warmth. An integrated cork underlay reinforces thermal and acoustic properties, resulting in a silent environment and important energy cost savings.



Wear layer with embossed texture

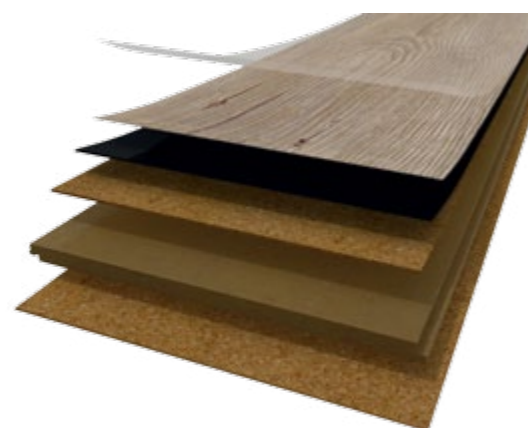
High resolution printed film

Solid vinyl core

Agglomerated cork  
Step sound reduction,  
warmth & comfort

High density fiberboard

Insulating cork underlay  
Impact sound reduction,  
& thermal reinforcement



# More than just a beautiful floor



## More **silence**

Cork's natural properties make it an excellent sound absorber. **Vinyl**comfort floors reduce noise transmission between and within rooms, creating a quieter and peaceful environment.



## More **warmth**

The unique thermal insulation features of cork provide an optimal floor temperature all year round, assuring a more warm and comfortable ambiance with energy cost savings.



## More **walking comfort**

**Vinyl**comfort floors are very comfortable to walk on due to cork's natural and inherent flexibility providing a unique comfort in movement. Even when walking barefoot, a sense of cosiness is felt.



## More **body wellness**

Softer than wood and harder than carpets, the perfect mix to absorb heel strike impacts, relieving leg and back stress, but stable enough to help the foot impulse and decrease the walking fatigue.



## More **impact resistance**

**Vinyl**comfort floors have the ability to bounce back from hard impacts, which makes them very robust and increases the life span of the flooring.

## Realistic & Durable

The remarkable enduring beauty

## Warm & Comfortable

Feel a warm and pleasant touch under your bare feet

## Quiet & Healthy

Improve quality of life



# Ultimate Luxury

with the comfort of cork

# The sublime balance of Vinyl with Cork flooring

The sublime balance was achieved. This contemporary technology combines the luxury of vinyl designs with the unique comfort of cork, accomplished with an excellent reproduction of natural textures.

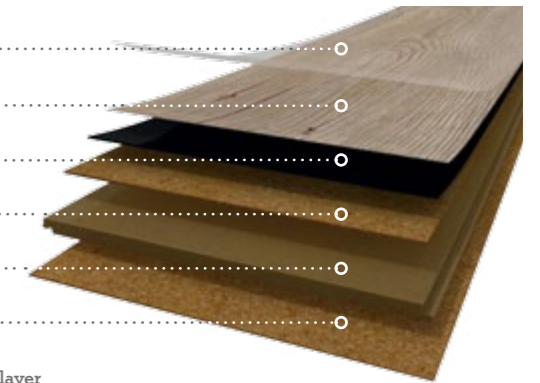
The realistic wood and stone visuals of this collection, with all the benefits of cork inside, are the perfect choice to create comfortable, warmth and peaceful atmospheres.

### Floating solution

With the glueless Corkloc® installation system, simply put the planks together and securely click them into place. It is a very quick, safe and clean solution.

The stone visuals are available in a tile format of 605 x 445mm or a board format of 905 x 295mm. All the wood visuals are available in the elegant plank of 1220 x 185mm.

- Protective wear layer** 0,3mm or 0,55mm, with embossed texture ..... Easy maintenance & extra resistance
- High resolution printed film** ..... Decorative visual
- Solid vinyl layer** 1,2mm ..... Core layer
- Agglomerated cork** 1,5mm ..... Step sound reduction, warmth & comfort
- HDF - High Density Fiberboard with Corkloc®** 6mm ..... Quick & easy installation
- Integrated cork underlay** 1,2mm ..... Impact sound reduction & thermal reinforcement



**0,3 mm wear layer**  
For domestic and light commercial areas



**0,55mm wear layer**  
For heavy commercial traffic areas

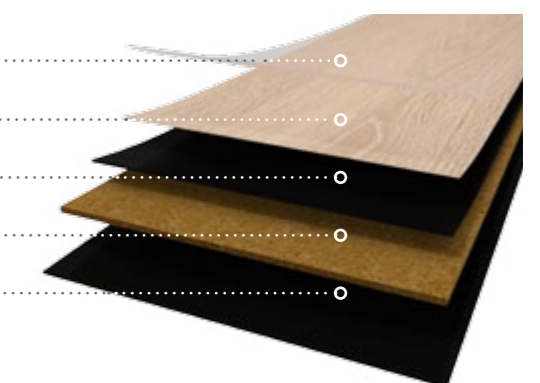


### Glue down solution

The glue down solution with its 6mm thickness can be applied on top of almost any existing surface, being ideal for renovation projects. Its strong and balanced structure reduces the telegraphing effect, which means that subfloor irregularities don't pass through. It only requires the use of one side acrylic adhesive, providing a faster installation.

This solution is available with an elegant plank dimension of 1230 x 150mm with 4 sides beveled and a 0,55mm wear layer.

- Protective wear layer** 0,55mm with embossed texture ..... Easy maintenance & extra resistance
- High resolution printed film** ..... Decorative visual
- Solid vinyl layer** 1,2mm ..... Core layer
- Agglomerated cork** 3mm ..... Step sound reduction, warmth & comfort
- Embossed vinyl backing layer** 1,2mm ..... Structural balancing layer



**0,55mm wear layer**  
For heavy commercial traffic areas



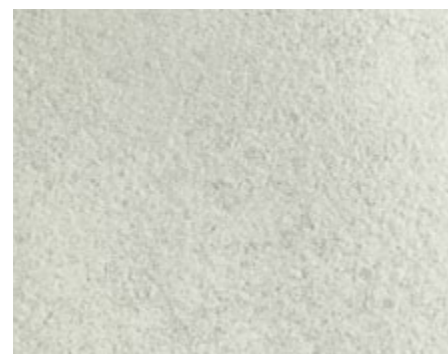
# Natural realistic look!



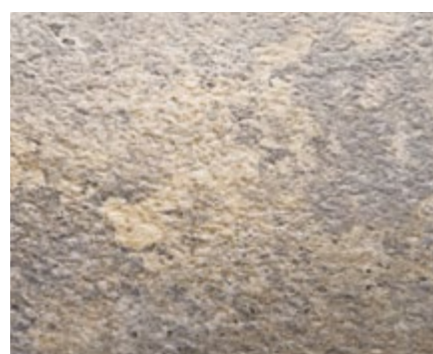
Synchronized perfection of wood grain and knots

## Rich textures for an intense and natural realism

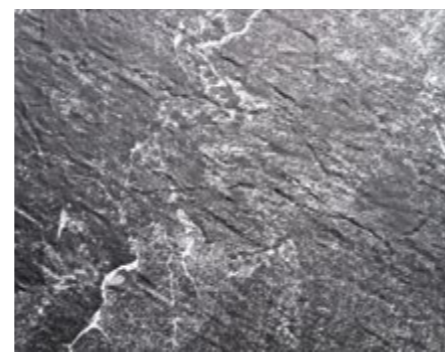
Specific surface textures were developed in order to offer a remarkable realism for every type of floor. Smooth, grained or brushed – inspired by the most traditional wood & stone working techniques – **Vinyl**comfort floor touches your desire with its luxurious look.



**Moonscape Stone**  
Delicate small rims resembling the moon surface.



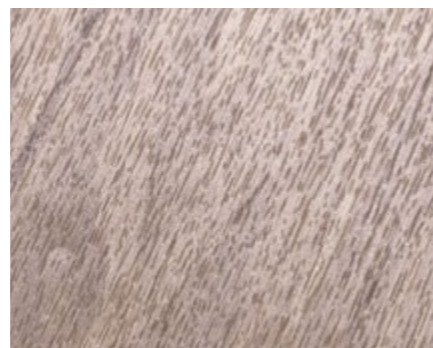
**Volcanic stone**  
A soft and sophisticated structure.



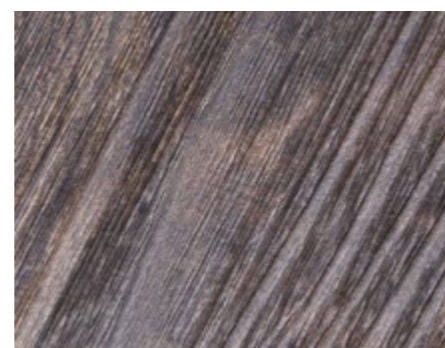
**Sliced stone**  
The gross stone strong texture.



**Grained stone**  
A natural smooth and fine touch.



**Fine pore wood**  
A plain appearance surface with a smooth touch.



**Brushed wood**  
A strong wood texture with a brushed effect.

## Authentic embossed texture for a natural look and feel

With the registered embossing revolutionary technology, Wicanders is able to perfectly synchronize impressive surface textures to each luxurious design intensifying the feeling of depth. The result is a high quality floor where the natural textures can hardly be told apart from real materials. Four amazing designs were created to suit all kind of styles.



**Century**  
A rustic pine with knots that inspires iconic ambiances with centuries past.



**Arcadian**  
A washed weather-beaten alpine larch that give a rustic flare in any modern space.



**Castle**  
A brushed antic oak that will add unique and authentic rustic character to any space.



**Sawn**  
A sawn white washed oak, ideal to add contrast to a modern interior design or to underline a rustic country style.

# Light shades

## Creating light and space

The light shades bright up and amplify spaces, providing a pure and serene atmosphere. Due to its extreme versatility it is the perfect choice for the base of modern decorations.



**Light Beech**  
 B7T0001 - 1230 x 150 x 6mm | Glue down 0,55mm wear layer  
 B0T0003 - 1220 x 185 x 10,5mm | Floating 0,3mm wear layer  
 B0T0002 - 1220 x 185 x 10,5mm | Floating 0,55mm wear layer



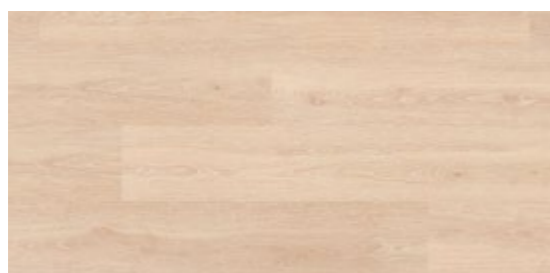
**Wheat Pine**  
 B7R3001 - 1230 x 150 x 6mm | Glue down 0,55mm wear layer  
 B0R3001 - 1220 x 185 x 10,5mm | Floating 0,55mm wear layer



Sand Oak



**Linen Cherry**  
 B7R0001 - 1230 x 150 x 6mm | Glue down 0,55mm wear layer  
 B0R0001 - 1220 x 185 x 10,5mm | Floating 0,55mm wear layer



**Sand Oak**  
 B7R1001 - 1230 x 150 x 6mm | Glue down 0,55mm wear layer  
 B0R1001 - 1220 x 185 x 10,5mm | Floating 0,55mm wear layer



Wheat Pine

### Expressive contrasts

The expressive contrasts, are a perfect choice to create an unique and astonishing organic look, with unique effects and nuances, that will enrich interior atmospheres.



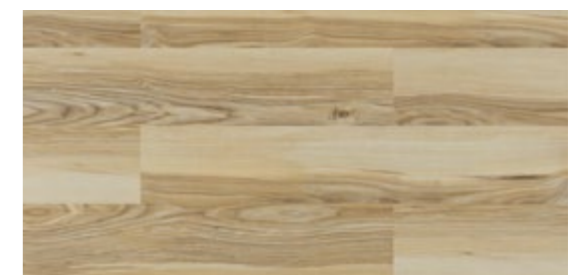
**Frozen Oak**  
BON9001 - 1220 x 185 x 10,5mm | Floating 0,3mm wear layer



Olive Ash



**Nordic Ash**  
B7V4001 - 1230 x 150 x 6mm | Glue down 0,55mm wear layer  
B0V4001 - 1220 x 185 x 10,5mm | Floating 0,55mm wear layer



**Olive Ash**  
BON7001 - 1220 x 185 x 10,5mm | Floating 0,3mm wear layer

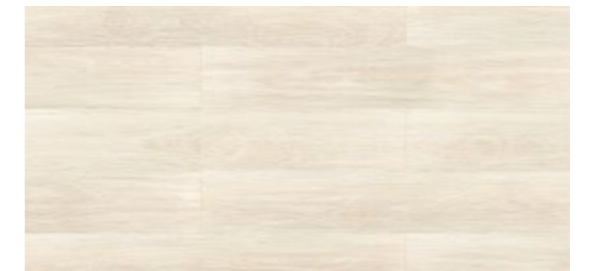
This sample image is cut from a larger piece. Decor and shade may vary slightly.

## Modern Rustic

The Modern Rustic light visuals are perfect to create a casually elegant decor with a harmonious and welcoming interior.



**White Oak**  
B0M8001 - 1220 x 185 x 10,5mm | Floating 0,3mm wear layer



**Pearl Oak**  
B0M7001 - 1220 x 185 x 10,5mm | Floating 0,3mm wear layer



**Alaska Oak**  
B0Q0003 - 1220 x 185 x 10,5mm | Floating 0,3mm wear layer



**Claw Silver Oak**  
B7V3001 - 1230 x 150 x 6mm | Glue down 0,55mm wear layer  
B0V3001 - 1220 x 185 x 10,5mm | Floating 0,55mm wear layer



**Limed Grey Oak**  
B7T7001 - 1230 x 150 x 6mm | Glue down 0,55mm wear layer  
B0T7001 - 1220 x 185 x 10,5mm | Floating 0,55mm wear layer



**Rustic Limed Gray Oak**  
B7U0001 - 1230 x 150 x 6mm | Glue down 0,55mm wear layer  
B0U0001 - 1220 x 185 x 10,5mm | Floating 0,55mm wear layer



Limed Grey Oak

**Synchronized perfection of wood grain and knots**

With the registered embossing revolutionary technology, Wicanders is able to perfectly synchronize impressive surface textures to each luxurious design intensifying the feeling of depth.



**Sawn Twine Oak**  
 B7P2001 - 1230 x 150 x 6mm | Glue down 0,55mm wear layer  
 B0P2001 - 1220 x 185 x 10,5mm | Floating 0,55mm wear layer

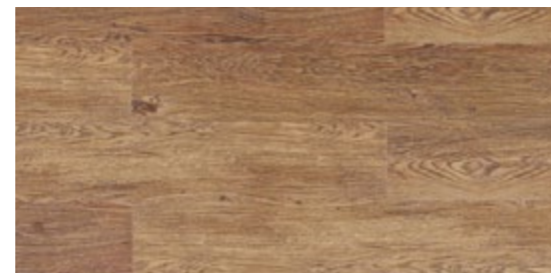


**Sawn Bisque Oak**  
 B7P3001 - 1230 x 150 x 6mm | Glue down 0,55mm wear layer  
 B0P3001 - 1220 x 185 x 10,5mm | Floating 0,55mm wear layer

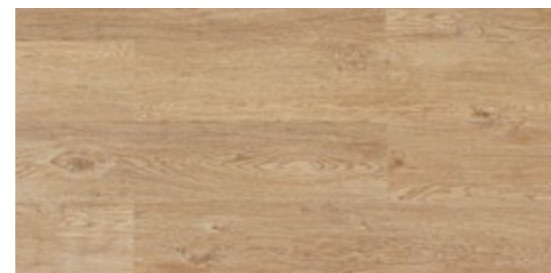


Authentic  
 Embossed  
 Texture

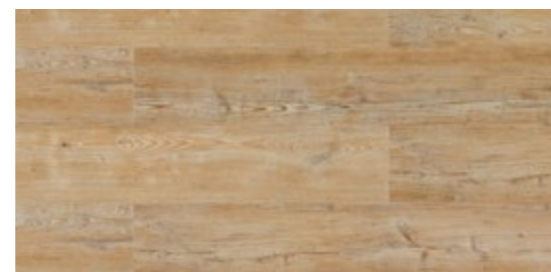
Castle Raffia Oak



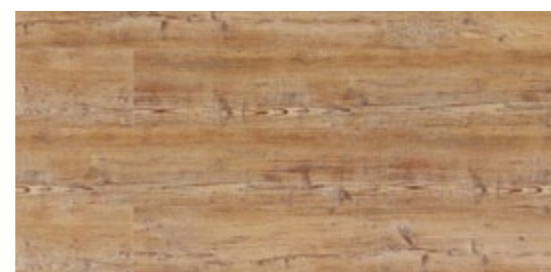
**Castle Toast Oak**  
 B7P1001 - 1230 x 150 x 6mm | Glue down 0,55mm wear layer  
 B0P1001 - 1220 x 185 x 10,5mm | Floating 0,55mm wear layer



**Castle Raffia Oak**  
 B7P0001 - 1230 x 150 x 6mm | Glue down 0,55mm wear layer  
 B0P0001 - 1220 x 185 x 10,5mm | Floating 0,55mm wear layer



**Arcadian Soya Pine**  
 B7P4001 - 1230 x 150 x 6mm | Glue down 0,55mm wear layer  
 B0P4001 - 1220 x 185 x 10,5mm | Floating 0,55mm wear layer



**Arcadian Rye Pine**  
 B7P5001 - 1230 x 150 x 6mm | Glue down 0,55mm wear layer  
 B0P5001 - 1220 x 185 x 10,5mm | Floating 0,55mm wear layer



Authentic  
 Embossed  
 Texture

Sawn Twine Oak



# Natural shades

Create an ambiance of total relaxation

The natural look of classic and neutral shades opens the door to a timeless beauty. Genuinely classic or freely modern, you'll breathe peace and tranquility in an ambiance with natural wooden designs.



Elegant Oak



**Amber Cherry**  
B0Q7003 - 1220 x 185 x 10,5mm | Floating 0,3mm wear layer



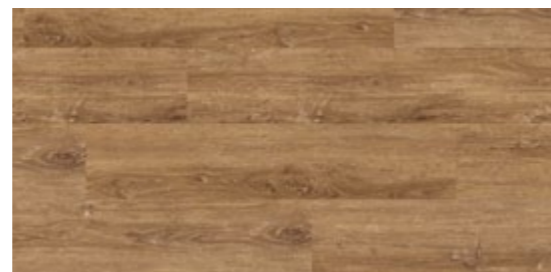
**Chalk Oak**  
B0Q1003 - 1220 x 185 x 10,5mm | Floating 0,3mm wear layer



**Elegant Oak**  
B7R4001 - 1230 x 150 x 6mm | Glue down 0,55mm wear layer  
B0R4001 - 1220 x 185 x 10,5mm | Floating 0,55mm wear layer



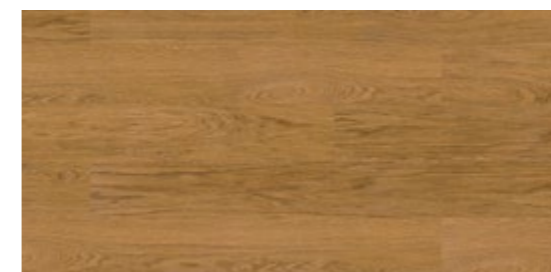
**Claw Brass Oak**  
B7V2001 - 1230 x 150 x 6mm | Glue down 0,55mm wear layer  
B0V2001 - 1220 x 185 x 10,5mm | Floating 0,55mm wear layer



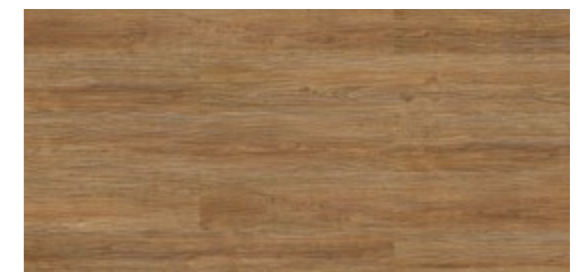
**Provence Oak**  
B0Q3003 - 1220 x 185 x 10,5mm | Floating 0,3mm wear layer



Honey Oak



**Nature Oak**  
B7T5001 - 1230 x 150 x 6mm | Glue down 0,55mm wear layer  
B0T5001 - 1220 x 185 x 10,5mm | Floating 0,55mm wear layer



**Honey Oak**  
B0M9001 - 1220 x 185 x 10,5mm | Floating 0,3mm wear layer

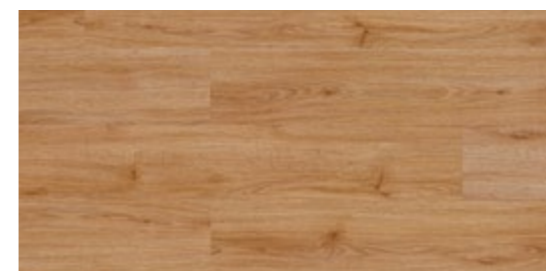
# Reddish shades

## A warm and exotic touch

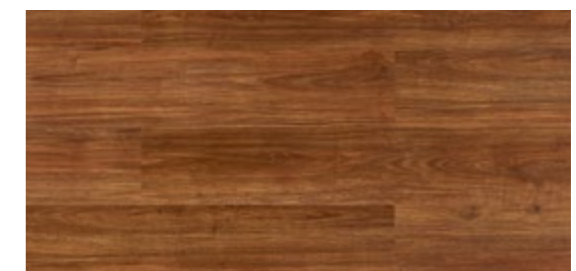
The reddish shades are the perfect choice to create a warm and comfortable atmosphere with a touch of vitality and life.



European Oak



European Oak  
B0Q2004 - 1220 x 185 x 10,5mm | Floating 0,3mm wear layer



Light Sucupira  
B0O9001 - 1220 x 185 x 10,5mm | Floating 0,3mm wear layer

This sample image is cut from a larger piece. Decor and shade may vary slightly.

# Brown shades

Radiate noble elegance and charm

The warm and attractive brown shades integrate your space giving an intimate feeling to it. They are the ideal selection for stylish perspectives in modern decors.



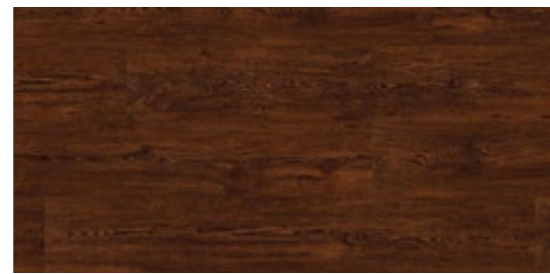
**Croft Oak**  
BOV9001 - 1220 x 185 x 10,5mm | Floating 0,3mm wear layer



**Limed Forest Oak**  
B7U3001 - 1230 x 150 x 6mm | Glue down 0,55mm wear layer  
B0U3001 - 1220 x 185 x 10,5mm | Floating 0,55mm wear layer



**Bark Oak**  
BOV8001 - 1220 x 185 x 10,5mm | Floating 0,3mm wear layer



**Tobacco Pine**  
B7R6001 - 1230 x 150 x 6mm | Glue down 0,55mm wear layer  
B0R6001 - 1220 x 185 x 10,5mm | Floating 0,55mm wear layer



The **Smoked look** brings a subtle smoked texture tone to the mix of warm and attractive brown shades. It graces any living or dining area with its deep tones and natural knots and whorls.



**Century Fawn Pine**  
 B7P7001 - 1230 x 150 x 6mm | **Glue down 0,55mm wear layer**  
 B0P7001 - 1220 x 185 x 10,5mm | **Floating 0,55mm wear layer**



**Century Morocco Pine**  
 B7P6001 - 1230 x 150 x 6mm | **Glue down 0,55mm wear layer**  
 B0P6001 - 1220 x 185 x 10,5mm | **Floating 0,55mm wear layer**



**Smoked Rustic Oak**  
 B7U4001 - 1230 x 150 x 6mm | **Glue down 0,55mm wear layer**  
 B0U4001 - 1220 x 185 x 10,5mm | **Floating 0,55mm wear layer**



**Smoked Oak**  
 B0Q5003 - 1220 x 185 x 10,5mm | **Floating 0,3mm wear layer**



Smoked Oak



Authentic  
 Embossed  
 Texture

Century Morocco Pine

# Intense Grey shades

## The foundation of a strong character

A grey gradient floor gives a strong statement to your space whatever style of living and furnishing you may choose. Among the dark grey floors you'll emphasize your avant-garde taste, creating individual and expressive vibrations.



**Platinum Oak**  
B0M6001 - 1220 x 185 x 10,5mm | Floating 0,3mm wear layer



**Brume Oak**  
B0N8001 - 1220 x 185 x 10,5mm | Floating 0,3mm wear layer



**Cinder Oak**  
B7R7001 - 1230 x 150 x 6mm | Glue down 0,55mm wear layer  
B0R7001 - 1220 x 185 x 10,5mm | Floating 0,55mm wear layer



**Midnight Oak**  
B0M5001 - 1220 x 185 x 10,5mm | Floating 0,3mm wear layer



Brume Oak

# Stones essence

## An authentic experience

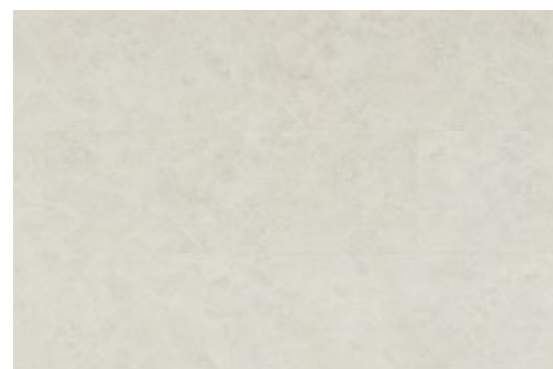
Stone patterns have the essence of a Mediterranean look and a fine grained touch. The most charming details of a stone, complemented with the unique advantages of cork, invite you to enjoy the stunning effect of a comfortable laid stone floor.



**Bianco Travertine**  
B0O2001 - 905 x 295 x 10,5mm | Floating 0,3mm wear layer



**Sandstone**  
B0S9001 - 605 x 445 x 10,5mm | Floating 0,55mm wear layer



**White Ceramic**  
B0P8001 - 905 x 295 x 10,5mm | Floating 0,3mm wear layer



**Beige Ceramic**  
B0P9001 - 905 x 295 x 10,5mm | Floating 0,3mm wear layer

This sample image is cut from a larger piece. Decor and shade may vary slightly.

With the more **strong and sophisticated** stone visuals, modern decors get a unique character, inspired in nature organic shapes, which will turn your floor into a décor statement.



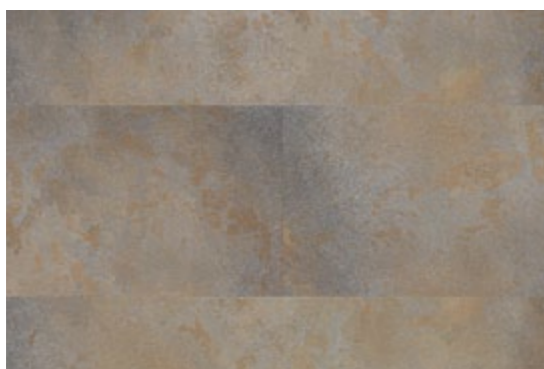
**Raw Umber**  
B000001 - 905 x 295 x 10,5mm | Floating 0,3mm wear layer



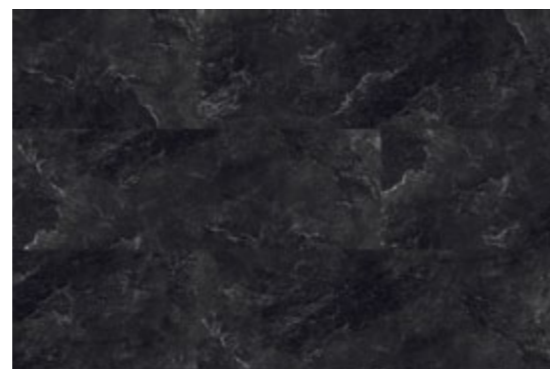
Coal Slate



Raw Umber



**Volcanic Ash**  
B003001 - 905 x 295 x 10,5mm | Floating 0,3mm wear layer



**Coal Slate**  
B001001 - 905 x 295 x 10,5mm | Floating 0,3mm wear layer



# Why is Wicanders<sup>®</sup> cork flooring the perfect choice?

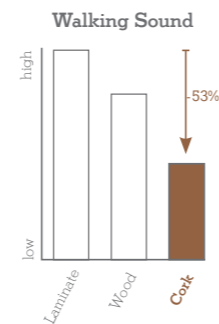


## More silence

Thanks to the acoustic insulation provided by cork, Wicanders floors can easily cut noise within and between rooms.

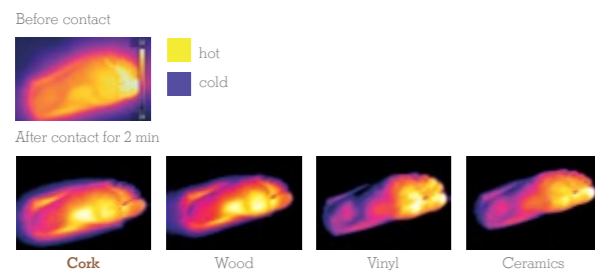
Comparing the walking sound between cork and laminate floors, tests confirm that cork floors have an exceptional result reducing the sound up to 53%.

Study run by Entwicklungsund Prüflabor Holztechnologie gmbH (EPH) in Germany according to IHD-W 431.



## More warmth

Infrared foot temperature



The natural thermal properties of cork make Wicanders floors very energy efficient, providing an optimal temperature all year round.

When testing foot temperature in contact with four different materials, cork floors stand out as being the best solution to retain heat.

Better than wood and by far better than ceramic when it comes to avoid energy dispersion.

Study run by IBV biomechanical institute in Valencia, Spain.

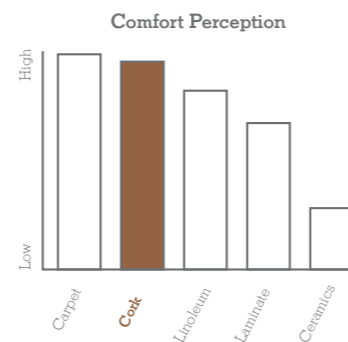
## More walking comfort

Cork floors are very comfortable to walk on, due to cork's natural and inherent flexibility, providing a unique comfort in movement.

When testing the level of comfort perception of people walking for 45 minutes over five different materials, results show that Wicanders cork floors have a great outcome.

With high comfort perception, it outperforms linoleum, laminate and ceramic floors.

Study run by IBV biomechanical institute in Valencia, Spain.

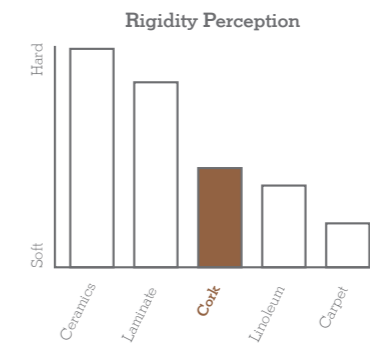


## More body wellness

Wicanders floors are stable enough to avoid the leg and back stress that is generated by walking on too hard or too soft floors.

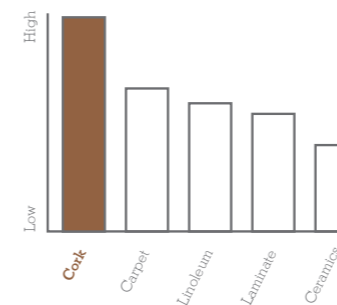
Softer than laminate and harder than carpets, Wicanders cork floors are the perfect mix to reduce heel strike impacts and related body tensions, but stable enough to help the foot impulse and provide the needed stability to reduce effort on walking and decrease body fatigue.

Study run by IBV biomechanical institute in Valencia, Spain.



## More impact resistance

Shock Absorbing



Due to cork's resilience and elasticity, Wicanders floors have the ability to bounce back from hard impacts.

Tests show that Wicanders cork floors have the highest shock absorbing performance.

When an object accidentally falls in a cork or in a laminate floor, different results come through.

Study run by IBV biomechanical institute in Valencia, Spain.

### Fast & Easy Installation

Floating floors with CorkLoc<sup>®</sup> 2G system are easier and faster to install. And in glue down floors there is no need to have a special subfloor preparation or to use a unilateral glue, so they save time and reduce installation expenses.

### Low & Easy Maintenance

The special surface finishing of Vinylcomfort floors make them easier to clean and maintain.



### Sustainable

Cork comes from the bark of the cork oak tree. It is removed from the trunk by hand without ever damaging the tree. Every year a new bark grows making it a renewable and sustainable resource.





# Think green choose Wicanders®

Wicanders® is a truly sustainable brand! Produced by Amorim, it represents a unique balance between the creation of wealth and the protection of the environment. The starting point is a raw material that is extracted cyclically from the cork oak trees without ever damaging them. This raw material is then transformed into high value-added products while promoting the economic and social sustainability of areas at risk of desertification.

Several eco-efficiency studies, based on a comparative analysis with several other types of flooring, illustrate the excellent environmental performance of Wicanders® products and its manufacturing process. Besides the smaller amounts of energy and raw materials required for the manufacturing process, these products actively contribute to reducing global warming, not only through their low emissions, but also due to cork's natural property of retaining CO<sub>2</sub>.

It is estimated that the Portuguese cork oak forest – montado – is responsible for retaining 5% of the country's annual CO<sub>2</sub> emission, representing 4.8 million tons per year.



## The importance of Cork Oak

The Cork Oak (*Quercus Suber L.*) is a tree belonging to the Oak family from which Cork is extracted. Its value is based not only on the products extracted from the tree, but on all of the agricultural, forest, pastoral and hunting activities that revolve around the cultivation of the Cork Oak.

Regular extraction of the Cork (a process called stripping) is a fundamental contribution for environmental, economic and social sustainability in the rural areas of the Mediterranean region where the Cork Oak may be found.

The Cork tree is a slow growing tree, which may live for 200 years, which allows it, on average, to be stripped 16 times during its lifetime. The first extraction of cork from the Cork Oak tree occurs only 25 years after planting, following which it is harvested in 9 year cycles, without ever damaging the tree in any way. This method allows the cork oak forest to fulfill its role of fixing CO<sub>2</sub>, thus actively contributing to reduce global warming.

The Cork forest in Portugal (700.000 hectares), known as "Montado", is a typical Iberian Landscape which is key in supporting a natural bio-diversity, including some of the most endangered species in the world: Iberian Lynxes, Imperial Eagles', Black Storks, Wolves and Wild Bears.



# A GIFT FROM NATURE



Greenguard Certification helps the identification of interior products and materials that have low chemical emissions, improving the quality of the air in which the products are used. It promotes global sustainability, environmental health, and safety.



As of January 2012, France has adopted regulations that limit total VOC emissions of building products. Manufacturers, selling their products in France must obtain a classification ranging from A+ (very low emissions) to C (high emissions). The declared goal is to improve indoor air quality in private/ commercial buildings.



An Environmental Product Declaration is a verified document that reports environmental data of products based on life cycle assessment and other relevant information in accordance with the international standard ISO 14025.

## Product Selector

	Vinylcomfort Floating				Vinylcomfort Glue down
	0,3mm Wear Layer		0,55mm Wear Layer		0,55mm Wear Layer
Class of Use (ISO 10874)	32	32	33	33	33 / 42
Thickness (mm)	10,5	10,5	10,5	10,5	6
Dimension (mm)	905x295	1220x185	605x445	1220x185	1230x150
Embossing	Yes	Yes	Yes	Yes	Yes
Beveling	No	No	4 sides	4 sides	4 sides
Wood	Textures				
Amber Cherry	Fine pore wood		B0Q7003		
Light Sucupira	Fine pore wood		B0Q9001		
Light Beech	Fine pore wood		B0T0003	B0T0002	B7T0001
Linen Cherry	Fine pore wood			B0R0001	B7R0001
Elegant Oak	Fine pore wood			B0R4001	B7R4001
Nature Oak	Fine pore wood			B0T5001	B7T5001
Limed Grey Oak	Fine pore wood			B0T7001	B7T7001
Nordic Ash	Fine pore wood			B0V4001	B7V4001
Platinum Oak	Fine pore wood	B0M6001			
Midnight Oak	Fine pore wood	B0M5001			
White Oak	Brushed wood	B0M8001			
Pearl Oak	Brushed wood	B0M7001			
Alaska Oak	Brushed wood	B0Q0003			
Chalk Oak	Brushed wood	B0Q1003			
European Oak	Brushed wood	B0Q2004			
Provence Oak	Brushed wood	B0Q3003			
Honey Oak	Brushed wood	B0M9001			
Smoked Oak	Brushed wood	B0Q5003			
Olive Ash	Brushed wood	B0N7001			
Brume Oak	Brushed wood	B0N8001			
Frozen Oak	Brushed wood	B0N9001			
Bark Oak	Brushed wood	B0V8001			
Croft Oak	Brushed wood	B0V9001			
Sand Oak	Brushed wood			B0R1001	B7R1001
Wheat Pine	Brushed wood			B0R3001	B7R3001
Tobacco Pine	Brushed wood			B0R6001	B7R6001
Cinder Oak	Brushed wood			B0R7001	B7R7001
Rustic Limed Gray Oak	Brushed wood			B0U0001	B7U0001
Limed Forest Oak	Brushed wood			B0U3001	B7U3001
Smoked Rustic Oak	Brushed wood			B0U4001	B7U4001
Claw Brass Oak	Brushed wood			B0V2001	B7V2001
Claw Silver Oak	Brushed wood			B0V3001	B7V3001
Castle Raffia Oak	Authentic embossed texture			B0P0001	B7P0001
Castle Toast Oak	Authentic embossed texture			B0P1001	B7P1001
Sawn Twine Oak	Authentic embossed texture			B0P2001	B7P2001
Sawn Bisque Oak	Authentic embossed texture			B0P3001	B7P3001
Arcadian Soya Pine	Authentic embossed texture			B0P4001	B7P4001
Arcadian Rye Pine	Authentic embossed texture			B0P5001	B7P5001
Century Morocco Pine	Authentic embossed texture			B0P6001	B7P6001
Century Fawn Pine	Authentic embossed texture			B0P7001	B7P7001
Stone					
Raw Umber	Grained stone	B0O0001			
Bianco Travertine	Grained stone	B0O2001			
Volcanic Ash	Grained stone	B0O3001			
Sandstone	Volcanic stone		B0S9001		
Coal Slate	Sliced stone	B0O1001			
White Ceramic	Moonscape stone	B0P8001			
Beige Ceramic	Moonscape stone	B0P9001			

## Technical Data Sheet

			Vinylcomfort Glue down	Vinylcomfort Floating	
			0,55mm Wear Layer 1230 x 150 x 6 mm	0,55mm Wear Layer 1220 x 185 x 10,5 mm 605 x 445 x 10,5mm	0,3mm Wear Layer 1220 x 185 x 10,5 mm 905 x 295 x 10,5mm
Level of use Domestic	ISO 10874	Class	23	23	23
Level of use Commercial	ISO 10874	Class	33	33	32
Level of use Industrial	ISO 10874	Class	42	-	-
	Standard-Test Method	Unit	Specification EN 655 + EN 649	Specification EN 14085 + EN 649	Specification EN 14085 + EN 649
General properties					
Dimensions	ISO 24342	mm	≤ 0,13% up to 0,5mm max.	± 0,10% up to width: max. 0,5 mm length: max. 2,0 mm	± 0,10% up to width: max. 0,5 mm length: max. 2,0 mm
Overall thickness	ISO 24346	mm	± 0,20	± 0,25	± 0,25
Squareness and Straightness ≤ 400mm > 400mm	ISO 24342	mm	≤ 0,25 ≤ 0,35	-	-
Straightness measured at the surface layer	ISO 24342	mm	-	≤ 0,30	≤ 0,30
Squareness	ISO 24342	mm	-	≤ 0,50	≤ 0,50
Thickness of agglomerated composition cork base	ISO 24340	mm	≥ 3	-	-
Apparent density	EN 672	Kg/m³	-	Nominal value (960) ± 50	Nominal value (900) ± 50
Mass per unit area	ISO 23997	g/m²	Nominal value (7000) -10%; + 13 %	Nominal value (10150) - 10 % + 13%	Nominal value (9800) - 10 % + 13%
Density of wear layer	ISO 23996	Kg/m³	Nominal value (1240) ± 50	-	-
Dimensional stability (humidity)	EN 669 (Annex C)	mm	-	≤ 5	≤ 5
Dimensional stability (heat)	ISO 23999	%	≤ 0,4	-	-
Openings between panels	EN 14085 (Annex B)	mm	-	≤ 0,20	≤ 0,20
Height difference between panels	EN 14085 (Annex B)	mm	-	≤ 0,20	≤ 0,20
Flatness of the panel (Length - Concave / Convex)	EN 14085 (Annex A)	%	-	≤ 0,50 / ≤ 1,0	≤ 0,50 / ≤ 1,0
Flatness of the panel (Width - Concave / Convex)	EN 14085 (Annex A)	%	-	≤ 0,10 / ≤ 0,15	≤ 0,10 / ≤ 0,15
Residual indentation	ISO 24343-1	mm	≤ 0,20	≤ 0,15	≤ 0,15
Curling after exposure to heat	ISO 23999	mm	≤ 6	-	-
Colour fastness	ISO 105-B02	Blue wool scale	≥ 6	≥ 6	≥ 6
Classification properties - EN 655 + EN 649 + EN 14085					
Wearing Group	EN 660-1	Thickness loos (Δ lmm)	Wear group T	Wear group T	Wear group T
Overall thickness (Vinyl + Cork layer)	ISO 24346	mm	≥ 3,0	≥ 3,0	≥ 3,0
Thickness of wear layer (Wear Group T)	ISO 24340	mm	≥ 0,55	≥ 0,55	≥ 0,3
Castor chair	EN 425	Visual effect - after 25 000 cycles	No disturbance to the surface other than slight change in appearance and no delamination shall occur	No disturbance to the surface other than slight change in appearance and no delamination shall occur	No disturbance to the surface other than slight change in appearance and no delamination shall occur
Simulated movement of a furniture leg	EN 424	Visual effect	No damage shall be visible after testing with a type 2 foot	No damage shall be visible after testing with a type 2 foot	No damage shall be visible after testing with a type 2 foot
Safety properties - EN 14041					
Fire resistance	EN 13501-1	Class	Bfl s1	Bfl s1	Bfl s1
Slip Classification	EN 13893	Class	DS	DS	DS
Formaldehyde emission	DIN EN 717-1	Class	E1	E1	E1
Electrical behaviour	EN 1815	kV	Antistatic	Antistatic	Antistatic
Content pentachlorophenol (PCP)	CEN/TR 14823 (Ihd-W 409)	mg/Kg	PCP Free	PCP free	PCP free
Additional properties					
Stains Resistance	ISO 26987 (a)	Grade	Grade 0 (b) *	Grade 0 (b) *	Grade 0 (b)
Thermal resistance	EN 12667	(m²K)/W	0,053	0,093	0,104
Impact sound reduction	ISO 140-8	dB (Δ Lw)	14	16	16
Step sound/ Step sound reduction	NF S 31 - 074	L <sub>n,e,w</sub> (dB)/ΔE <sub>ρw</sub> (dB)	83/6 (c)	81	81
Walking noise	IHD - W431	dB (A)		Reduction improvement 11,4 dB(A) Difference of loudness 45,4%	Reduction improvement 11,4 dB(A) Difference of loudness 45,4%

- (a) The following products were tested: Desinfectant, C2H5OH, NH4OH, Citric acid, Iodine, petroleum, spirit  
 (b) Grade 0 - Unchanged / Grade 1 - Very little change / Grade 2 - Little change / Grade 3 - Change / Grade 4 - Strong Change  
 \* Except Iodine - Grade 2 - Little change  
 (c) Slab with Vinylcomfort glue down reduces the step sound in 6dB when compared with the reference slab.



Produced by Amorim, the worldwide market leader in cork products, Wicanders matches nature's most pure values with avant-garde technologies to provide high quality, ecologic and stylish flooring. Wicanders has an unsurpassed reputation for developing high

standard and unique comfortable flooring solutions, following the latest decoration tendencies and targeting both residential and commercial market segments.

Wicanders is truly a sustainable brand!



<b>DE</b>	Amorim Deutschland GmbH (+49) 4221 5 93-01 .....	germany.ar.de@amorim.com
<b>NL/BE/LU</b>	Amorim Benelux B.V. (+31) 166 604 111 .....	info.ar.nl@amorim.com
<b>AT</b>	Amorim Deutschland GmbH (+43) 1 54 51 65 10 .....	austria.ar.de@amorim.com
<b>CH</b>	Amorim Flooring Switzerland AG (+41) 41 726 20 20 .....	info@amorim.ch
<b>PT</b>	Amorim Revestimentos, S.A. (+351) 227 475 600 .....	geral.ar@amorim.com
<b>ES</b>	Amorim Revestimentos, S.A. (+34) 902 307 407 .....	info.ar.es@amorim.com
<b>FR</b>	Amorim Revestimentos, S.A. (+33) 800 914 848 .....	info.ar.fr@amorim.com
<b>CN</b>	Amorim Revestimentos, Macau (+85) 366 625 06 .....	info.ar.cn@amorim.com
<b>JP</b>	Amorim Japan Corporation (+81) 035 575 69 09 .....	amorimjapan.ar@amorim.com
<b>DK</b>	Timberman Denmark A/S (+45) 995 252 52 .....	timberman@timberman.dk
<b>PL</b>	Dom Korkowy, Sp. z o.o. (+48) 126 379 639 .....	krakow@domkorkowy.pl
<b>US</b>	Amorim Flooring North America (+1) 410 553 60 62 .....	info.ar.us@amorim.com
<b>RU</b>	Amorim Revestimentos, S.A. (+7) 495 280 7860 .....	info.ar.ru@amorim.com



**HeadQuarters**

Amorim Revestimentos S.A  
 (+351) 227 475 600  
 geral.ar@amorim.com

